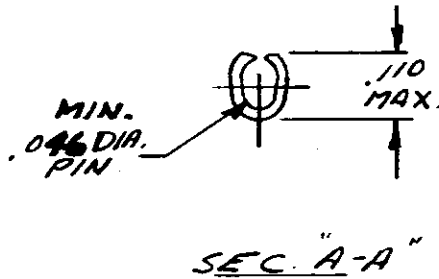
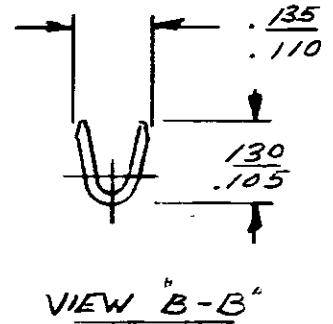
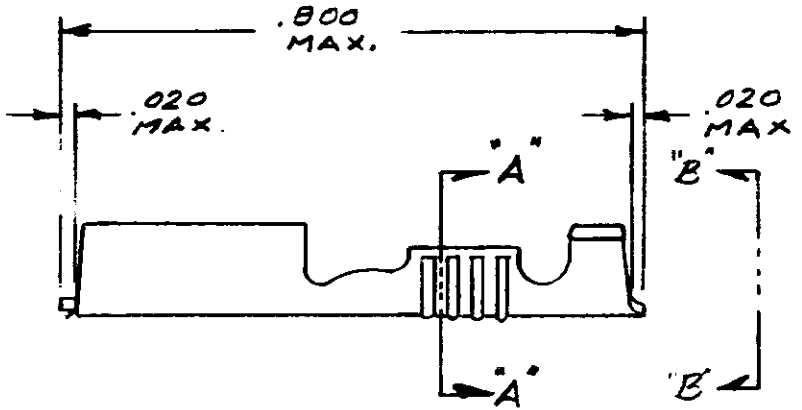


| REVISIONS | | | |
|-----------|---------------------------|---------|----------|
| LTR | DESCRIPTION | DATE | APPROVED |
| B1 | REVISED PER ECO-11-005294 | 12APR11 | HMR |



| FINISH | PART NO | COMBINATION NO. | |
|--------|---------|----------------------|---|
| NONE | 42731-1 | 42731-1 (42640-1 LP) | △ |
| TIN | 42731-2 | 42731-2 (42640-2 LP) | △ |
| SILVER | 42731-3 | 42731-3 (42640-3 LP) | |

△ - FOREIGN PRODUCTION ONLY.

| | | | |
|---|----------------------------------|--|-------------------------------|
| | | PART NO | |
| UNLESS OTHERWISE SPECIFIED DIMENSIONS ARE IN INCHES. TOLERANCES ON: DECIMALS ± .015 ANGLES ± 10° | CONTRACT NO | TE Connectivity | |
| | DR <i>D. D. Brown</i> 2-28-75 | | |
| MATERIAL .016 BRASS | CHK <i>C. A. HERTON</i> 2/28/75 | NAME "250" SERIES FASTON RECEPTACLE | |
| FINISH TABLE | APPD <i>C. A. HERTON</i> 2/28/75 | | |
| | DSGN APPD | SIZE A | CODE IDENT NO 00779 |
| | OTHER APPD | DRAWING NO 42731 | SHEET 1 - 1 |
| | | SCALE 4:1 | |